

Trans-anal Total Mesorectal Excision (TaTME)

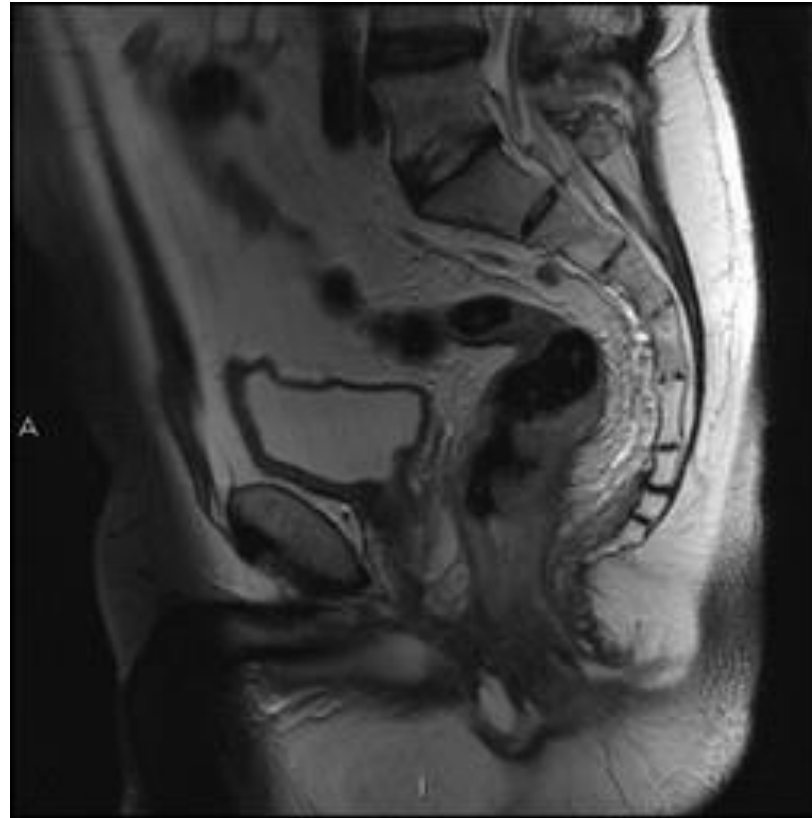
Denzil May

Consultant General & Colorectal Surgeon

Duchy Hospital & RCHT

Surgical Treatment of Rectal Cancer

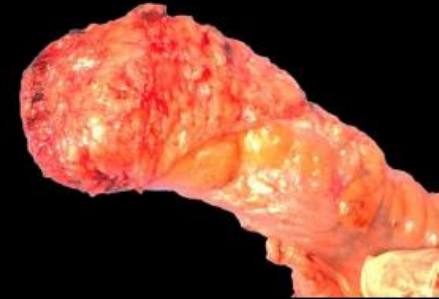
- ▶ Total Mesorectal Excision the standard surgical approach for rectal cancer
- ▶ Technical problems
 - ▶ Men
 - ▶ Bulky tumours
 - ▶ Following neo-adjuvant chemo-radiotherapy
- ▶ Outcomes
 - ▶ Oncological
 - ▶ Functional



TECHNICAL CHALLENGES



ONCOLOGICAL PERFECTION

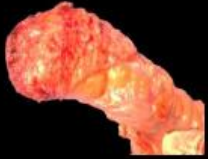


FUNCTIONAL OUTCOME



„THERE ARE OF COURSE
MANY WAYS
OF DOING AN OPERATION BADLY“

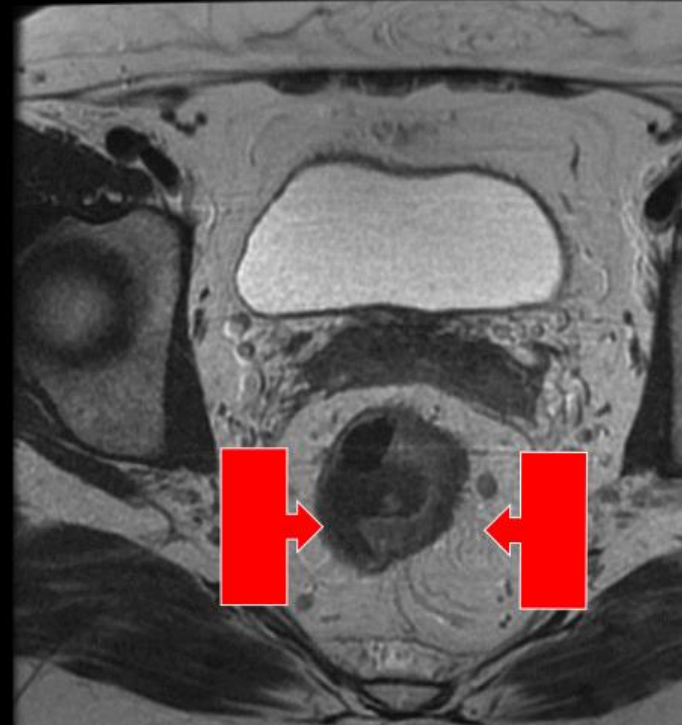


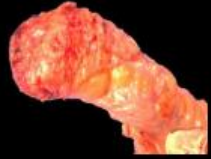


WHY NOT ALWAYS TME QUALITY QUIRKE 1 ?

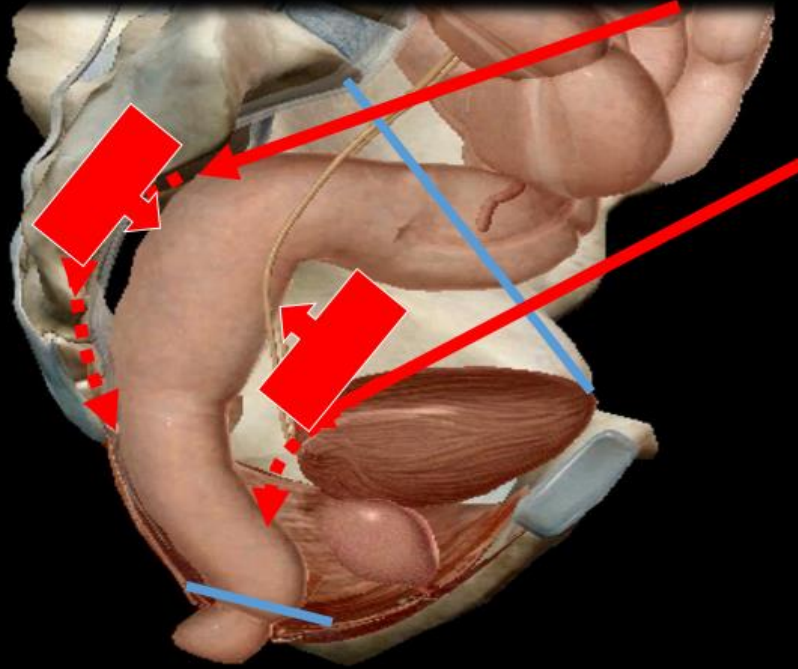
• UGLY TRIAS
NARROW PELVIS
BULKY TUMOUR
MEN

- TME Quality Literature Quirke 1
- open < 70 – 85 %
- Laparoscopy 80 – 90+%

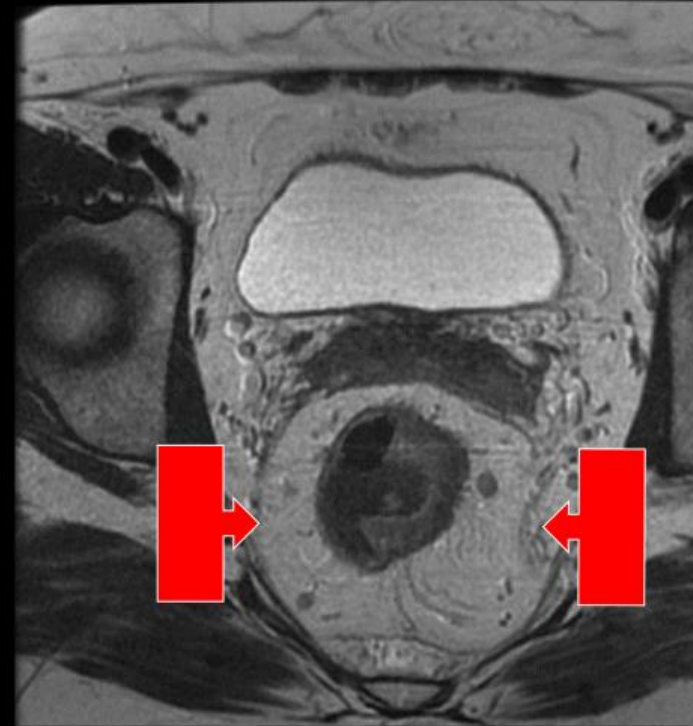


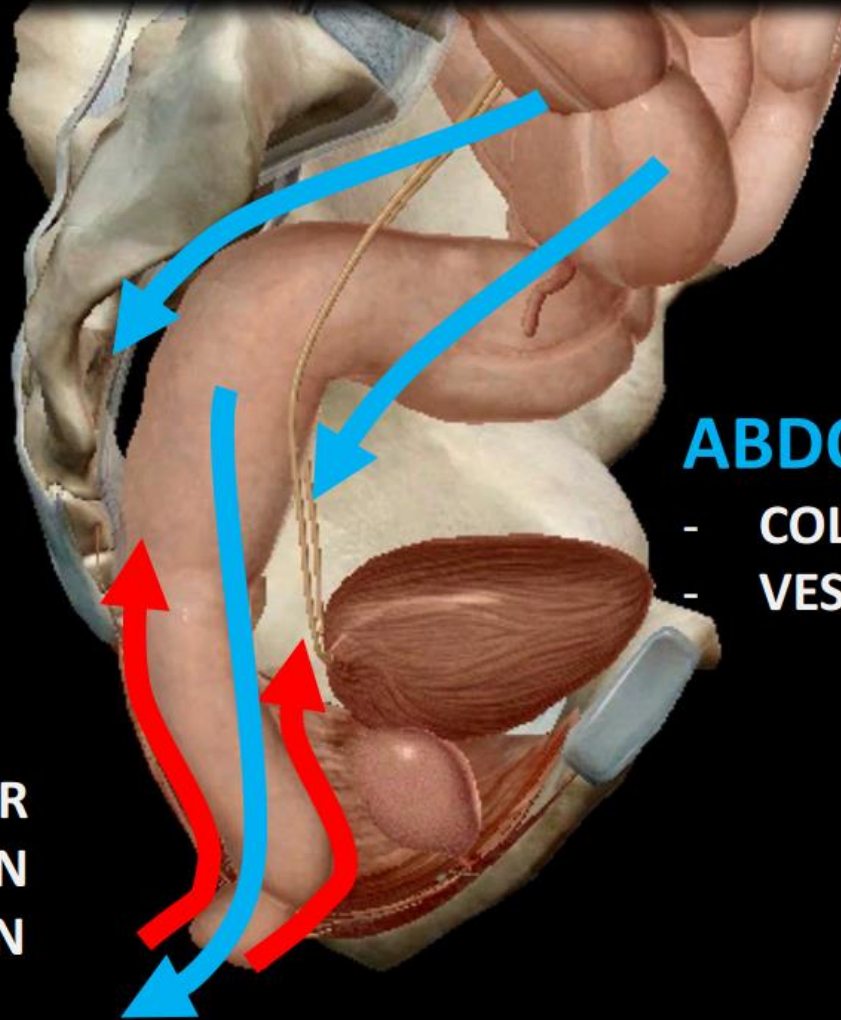


WHY NOT ALWAYS TME QUALITY QUIRKE 1 ?



LOWEST 6 CM





EASIER FROM ABOVE

ABDOMINAL PART

- COLORECTAL MOBILISATION
- VESSELS, FLEXURE

EASIER FROM BELOW

TRANSANAL PART

- EXACT DISTANCE TO TUMOUR
- DISTAL RECTAL MOBILISATION
- TOTAL MESORECTAL EXZISION

INTEGRATION OF NOTES CONCEPT?

Advantages of TaTME

- ▶ Better visualisation & preservation of neurovascular bundle
- ▶ Reduced specimen manipulation
- ▶ Improved distal resection margin
- ▶ Improved rectal washout
- ▶ Avoid transverse stapling of rectal stump
- ▶ Lower anastomotic leak rates
- ▶ Reduced conversion laparoscopic to open

Discussion / Questions?



Some information about me.....

My Background

- ▶ Born & Bred Cornishman
- ▶ Education:
 - ▶ Newlyn Infant School,
 - ▶ Tolcarne Primary School,
 - ▶ Mounts Bay Secondary School,
 - ▶ Penwith College,
 - ▶ Southampton University,
 - ▶ Wessex Basic & Higher Surgical Training,
 - ▶ Fellowship Bradford.
- ▶ Now back home, RCHT appointed 2013

My Specialist Interests

- ▶ General Surgeon
 - ▶ Emergency Take
 - ▶ Hernia surgeon (all abdominal wall herniae)
 - ▶ Skin lesions
- ▶ Colorectal Surgeon
 - ▶ Predominant Complex Laparoscopic (Total Colectomy, Ileo-anal Pouches, Complex Cancer & IBD)
 - ▶ Trans-anal surgery - TEO & TaTME
 - ▶ Lower GI endoscopist
 - ▶ Proctology (haemorrhoids, fissure, fistula, prolapse etc)
 - ▶ Functional problems (constipation, obstructive defecation)
 - ▶ Pilonidal Sinus disease
 - ▶ Endometriosis

Other Professional Interests

- ▶ Human Factors Training and Patient Safety
- ▶ Clinical Governance
- ▶ Quality Improvement

Family / Sport and other stuff



- ▶ Sailing
 - ▶ Was good once upon a time
 - ▶ MBSC
- ▶ Cycling (road)
- ▶ Surfing
 - ▶ Hayle Surf Lifesaving Club

Any problems or questions about any of my patients?

- ▶ Contact me (letters get lost frequently)
 - ▶ denzilmay@nhs.net
- ▶ Private work
 - ▶ www.denzilmay.com
 - ▶ Referrals
 - ▶ Secretary - Liz Venn (07500 847733)
 - ▶ Online referral form on my website
- ▶ Social Media
 - ▶ Twitter: @DenzilMay
 - ▶ Facebook: Denzil May Surgeon
 - ▶ LinkedIn: Denzil May